

Experimental Analysis of the Impact of Particles on the Cavitating Flow

Boštjan Gregorc^{1,*} – Andrej Predin² – Drago Fabijan³ – Roman Klasinc⁴

¹Dravske elektrarne Maribor, Slovenia

²University of Maribor, Faculty of Energy Technology, Slovenia

³Litostroj Power d.o.o., Slovenia

⁴Graz University of Technology, Austria

The purpose of this paper is to present an analysis of the impact of solid particles on the development of cavitating flow conditions around a hydrofoil. Experimental studies have been conducted in a cavitation tunnel with three different mixtures of particles and water. We used a particle-like properties, such as are found in river water, and with increasing mass concentration. We performed measurements of torque and the relative noise in the hydrofoil. The point in the formation of vapour phase on the hydrofoil and the pronounced frequency effect were determined by measuring the relative noise. Based on the analysis the results show that the particles increase the intensity and extent of cavitation.

© 2011 Journal of Mechanical Engineering. All rights reserved.

Keywords: particles, cavitation, noise, measurements

0 INTRODUCTION

Operation of water turbines and pumps in the natural environment depends on the seasonal changing of physical and biological properties of water (temperature, viscosity, surface tension, the content of dissolved and non-dissolved air content of impurities). As the flow of rivers and streams changes, so does the amount of impurities (particles) in water. A stronger local rainfall caused to 30-fold increase of impurities in water depending on underlying conditions. The lifetime of hydraulic machinery is highly dependent on the quality of the media (water). The effect of dirt (mud) in the water in most cases occurs in the form of wear and tear of mechanical parts, and leaks in the connection between rotating and fixed parts. It also causes and increased risk of cavitation due to impurities and gases under specific conditions (pressure, velocity) [1] and [2]. The impact of cavitation in hydraulic machinery represents a loss of energy with regard to the optimal operating conditions. In the case of the operation of water turbines, the effect of cavitation results in reduced utilization, increased noise and vibration, as well as mechanical damage to the turbine runner surfaces and other exposed areas [3].

Determination of the efficiency changes on prototypes caused by impurities in the water is

difficult to achieve, from the perspective of performance measurement. Constantly changing various parameters (oscillations of generating power pulsations, pressure, difference in altitude, temperature, air content and mass concentrations of particles) affect the credibility of the results [4]. The change in turbine efficiency is detected only over time, during which cavitation abrasion damage to surfaces are already present. For these variations of parameters in the case of the prototypes, we studied influence the particles in the water on the development of cavitation on hydrofoil in the laboratory. Due to the controlled parameters at the inlet of the tunnel, we used particles of known diameter, density and mass concentration. With this we come closer to reality state in river water.

1 MULTI-PHASE FLOW INFLUENCE ON HYDRAULIC MACHINERY OPERATING PROPERTIES

Research related to the movement of liquids and particles in the transition through the pump and turbine have been investigated by many authors [5] and [6]. For research, different material particle concentrations have been used, as well as various basic materials surfaces [7]. For the evaluation of developments and

*Corr. Author's Address: University of Maribor, Faculty of Mechanical Engineering, Smetanova 17, Maribor, Slovenia, bostjan.gregorc@dem.si

implications in the process of development of cavitation and abrasion, authors use CCD cameras - visualization, PIV Technology, methods of weighing and vibrations methods [2] to [8].

Authors of other studies have discovered a number of instabilities, among which the pulse cavitation cloud [1] and [9] is the most frequently addressed. In recent decades, research has been based on the mutual interaction between the liquid and the vapour phases. Mei et al. [5] and Shengcai [8] discovered that cavitation in water occurs earlier due to the presence of particles, in comparison to the pure water. The mass concentration ξ_c of particles, where the largest increase of the vapour phase occurs, is between 8 and 13 kgm⁻³.

Hydrodynamic cavitation causes a change of resistance, a change of hydromechanical flow properties, thermal and lighting effects, and erosion at streaming areas. During the operation of hydraulic machinery, the most undesirable cavitation is in the form of a cloud. This causes turbine or pump efficiency decrease and mechanical damage as a consequence of high local pressures, when the vapour bubbles condense, i.e. implode. During the turbine and/or pump operation, cavitation is detected as sharp sound that is not constant. Released pressure wave when the vapour phase collapse spreads through the vapour phase and liquid is drawn from a wide range of frequencies. The sound accompanies the basis of increased vibration in the occurrence of cavitation. Vibration and noise are the consequences of the shock-wave that is spreading in space and striking in the surrounding area. The noise is generated when bubbles collapse and is located in the high frequency band. Capturing cavitation noise is highly dependent on the position of installing the sensor.

Detection of cavitation noise forms the basis to determine the impact of particles on the development of cavitating flow (initial cavitation).

2 HYDRAULIC FORCES ON THE HYDROFOIL

With the creation of multi-phase flow in mixed streaming flow, changing forces are observed around hydrofoil. The flow of water

and particles causes a change of lift force Eq. (1) and drag force Eq. (2), and consequently torque Eq. (3). The forces could be written as:

$$F_l = C_L \cdot (B \cdot L \cdot \rho \cdot v_\infty^2 / 2), \quad (1)$$

$$F_d = C_D \cdot (B \cdot L \cdot \rho \cdot v_\infty^2 / 2), \quad (2)$$

$$M_t = C_M \cdot (B \cdot L^2 \cdot \rho \cdot v_\infty^2 / 2), \quad (3)$$

where C is coefficient, length of the profile is L , the width is B , and v_∞ is the free stream velocity.

Characteristic surface ($A = B \cdot L$) is equal to the projection of the hydrofoil in a plane which is perpendicular to the free stream velocity. Lift and drag are a result of the distribution of pressure and shear forces. When the condition is $p_m \leq p_v$, and at an appropriate velocity at the suction side of the hydrofoil, a vapour phase is developed. Initial cavitation number is expressed as Eq. (4):

$$\sigma = (p_\infty - p_v) / (\rho \cdot v_\infty^2 / 2). \quad (4)$$

The impact of the vapour phase is reflected in lift and drag force, which depends on the development of the vapour phase.

Determination of changes in pressure based on the relative motion of particles can only be approximated. The movement of particles in the body part streaming and changing its direction. Basically, we can write that:

$$Q_m \rho_m = Q_d \rho_d + Q_l \rho_l, \quad (5)$$

where Q_m is suspension flow rate, Q_l is water flow rate and Q_d is flow rate of dispersed particles.

Suppose that a mixture of water with particles, and water without particles have the same pressure and velocity ($p_{0m} = p_{0l}$, $v_{0m} = v_{0l}$) at the entrance through the plane 0-0, which is perpendicular to the direction of speed. In the area of minimum pressure on the hydrofoil at the plane 1-1, the conditions are different ($p_{1m} \neq p_{1l}$). Using an energy approach for

moving plane from 0 to a plane 1 it can be written:

$$\frac{p_{0m} - p_{1m}}{\rho_m g} + \frac{v_{0m}^2 - v_{1m}^2}{2g} = \frac{(v_{0p}^2 - v_{1p}^2) + (v_{0l}^2 - v_{1l}^2)}{2g} + \frac{p_{0l} - p_{1l}}{\rho_l g} \quad (6)$$

Assume that velocities $v_{1p} \approx v_{1m} \approx v_{1l}$ are in the same mixture, because of the distance between the particles, $L/d_d \gg 1$ and low concentrations of dispersed particles. The assumption is the case of natural river water, where the maximum mass concentration in most cases does not exceed $\xi_c = 1 \text{ kg/m}^3$. For this reason, we ignore the interactions between particles. Considering this fact, the velocity differences in the Eq. (6) disappear. Eq. (6) can be written using $p_0 - p_1 = \Delta p$, as:

$$\frac{\Delta p_m}{\rho_m g} = \frac{\Delta p_l}{\rho_l g} \Rightarrow \Delta p_m = \frac{\rho_m}{\rho_l} \Delta p_l \quad (7)$$

The ratio of densities of mixture and pure water influence the pressure change of the mixture. By increasing the concentration the influence on the development of vapour phase condition ($p_m - p_v(T) = \Delta p$) is achieved.

3 EXPERIMENT

We have performed tests on a small cavitation tunnel at the Faculty of Mechanical Engineering at the University of Maribor (FS). The tunnel was designed to research the development of cavitation in various forms of hydraulic hydrofoils. It is a closed type and allows mass flow up to $Q_i = 22 \text{ kgs}^{-1}$ in the tunnel (Fig. 1). The cavitation number change is performed by the controlled application of pressure p_s in the system. Flow rate is measured using an ultrasonic flowmeter.

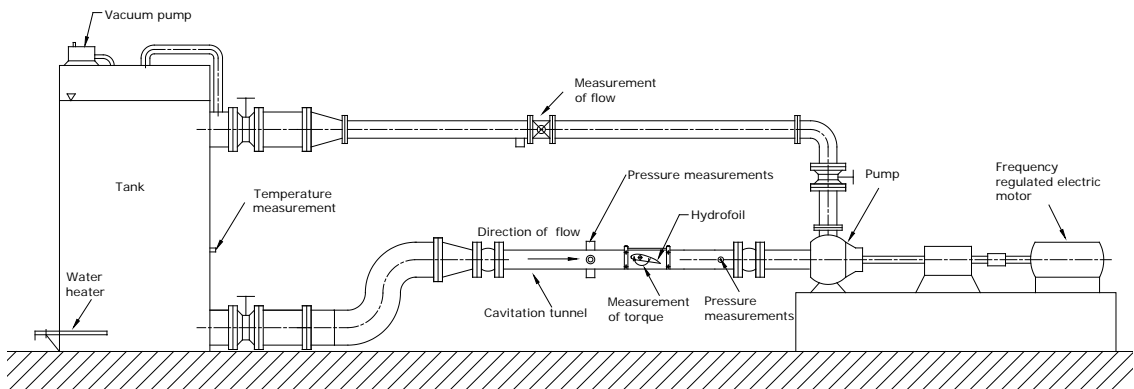


Fig. 1. Cavitation tunnel sketch

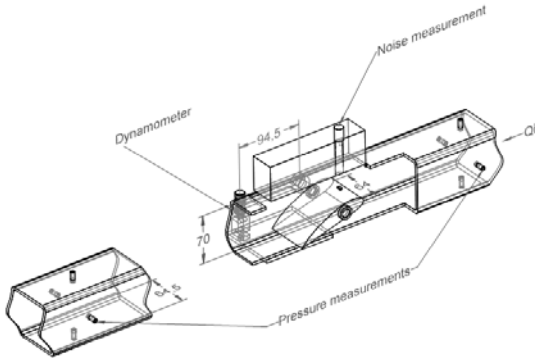
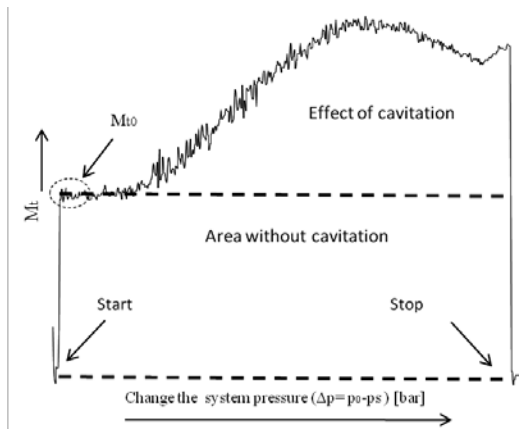


Fig. 2: Geometry of cavitation tunnel and testing hydrofoil

The length of the blade profile is $L_0 = 104$ mm and the width is $B = 64$ mm (Fig. 2), overall length ($l = 17 \times L_0$) of the cavitation plane is part of the tunnel ($64.5 \text{ mm} \times 70 \text{ mm}$). The hydrofoil was observed through the Plexiglas on the two perpendicular sides. The change in lift and drag forces were measured via changes in a torsion lever attached to the shaft on a fixed hydrofoil and a dynamometer accuracy of 0.1% (Ahlborn K - 25). The link shaft and the dynamometer placed with cantilever handle with a length of 94.5 mm. The pressure in the channel was measured before and after the hydrofoil. The measurements were performed at the different flow velocities (average) in the tunnel (2.6, 2.9, 3.3 and 3.6 ms^{-1}). Measurements were conducted at two different angle settings of the hydrofoil (16° and 20°). The water temperature in the system was $20 \pm 1^\circ \text{C}$. By reducing pressure in the system, we influence the decrease in the cavitation number, thus increasing the developed vapour phase. Measurement of lift and drag forces (M_t) was conducted without addressing the relative friction in the bearings (roller bearings). Visual monitoring of initial cavitation was performed on a metal hydrofoil block (Fig. 2) located in the middle part of the input hydrofoil surface (nozzle is square: $4 \times 2 \times 6 \text{ mm}$). The block was located 12 mm from the inlet



edge of the hydrofoil.

Fig. 3. A case measurement M_t of the profiled testing hydrofoil

Torque is shown as M_t/M_{t0} , where the ratio represents the initial state without cavitation $M_{t0} - \Delta p = 0$ bar (average in time $\Delta t = 10$ s) and M_t which depends on the reduction of pressure p_s . The boundary between the influence of cavitation and non-developed area of cavitation can be clearly observed (see Fig. 3).

Cavitation noise has been measured with the instrument (Cirrus Research plc - CR: 800B) mounted above the Plexiglass and isolated from its surroundings with Styrofoam. The sensor was placed away from the occurrence of vapour phase on the hydrofoil from 11 to 13 mm. Cavitation noise was measured in the various frequency ranges (from 25 Hz to 16 kHz), and at various cavitation numbers. Measurements were started with pure water (tap water), and continued with three different mass fractions of particles. The pressure in the channel was measured before and after the hydrofoil.

Estimated measurement errors for pure water (M_t/M_{t0}) and for three mass fractions are evident in Table 1.

Table 1. Particle mass fraction used in the experiment and measurement errors – M_t/M_{t0}

Mass fraction	ξ [-]	Estimated measurement errors - STDEV ($\Delta p = 0$ bar)
Pure water	$\xi = 0$	2.1
Fraction 1	$\xi = 0.001$	2.9
Fraction 2	$\xi = 0.0016$	3.1
Fraction 3	$\xi = 0.0032$	3.6

For measuring the impact on the development of cavitation, we used particles of material FR 240/F. The density of particles is $\rho_d = 1700 \text{ kgm}^{-3}$, (diameter of the used particles is between $25 < d_d < 35 \mu\text{m}$ – the mean diameter of particles is $30 \mu\text{m}$); they are insoluble in water, inert and do not oxidise. Particle density ρ_d and the mean diameter of particles d_d were chosen because of similar qualities of particles in the rivers in our geographic area. All measurements were

performed at the same conditions (mass flow, the reference pressure in the system, temperature).

3.1 Results and Discussion

Experimental measurements are shown as a relative comparison between the particle-free water and state water with particles.

The results of the occurrence of cavitation - σ on hydrofoil (pure water) at experimental measurements are comparable to results of other authors [7] and [10].

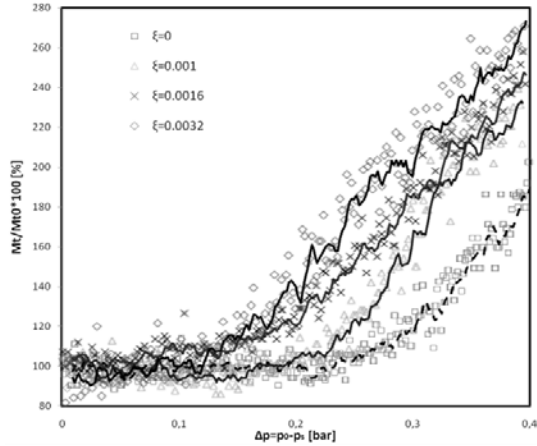


Fig. 4: The impact of mass fraction of particles to change M_t/M_{t0} ($v_{su} = 3.6 \text{ ms}^{-1}$, $\alpha = 16^\circ$)

Fig. 4 shows an increase in torque (ratio) M_t/M_{t0} by the addition mass fractions of particles in suspension. The difference between M_t/M_{t0} of clean water and a suspension of particles is greater in the case of small inclination angles of the hydrofoil (Fig. 5).

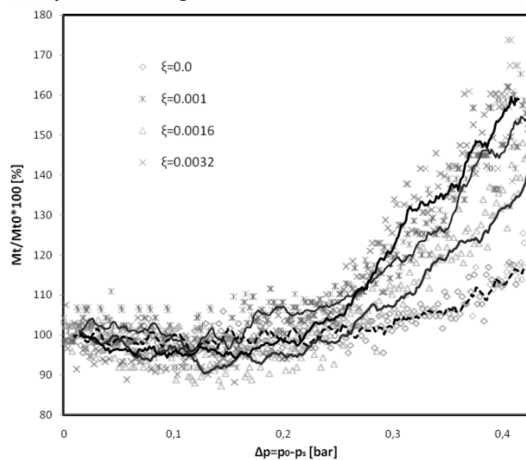


Fig. 5. The impact of mass fraction of particles to change M_t/M_{t0} ($v_{su} = 2.6 \text{ ms}^{-1}$, $\alpha = 20^\circ$)

Torque increases above the difference pressure of $\Delta p = 0.15 \text{ bar}$ (Fig. 5).

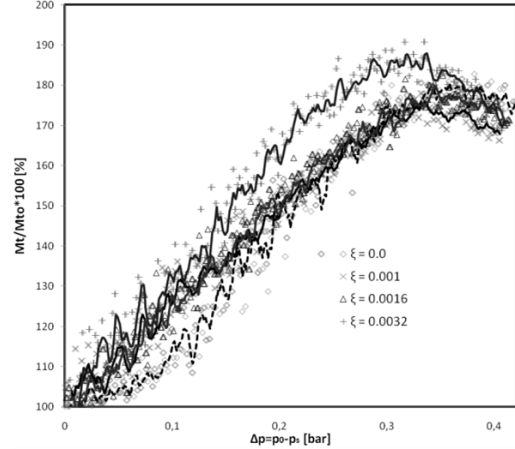


Fig. 6. Experimental comparison of torque and Δp on hydrofoil, using pure water and suspension with particle ($v_{su} = 3.3 \text{ ms}^{-1}$, $\alpha = 20^\circ$)

The part of Fig. 6 shows that the largest change in momentum can also be seen in the maximum mass fraction (ξ) of particles in the water. The experimental data is shown as a relative change of M_t/M_{t0} in the reduction of the dependence on pressure Δp (lower cavitation number). The change in M_t/M_{t0} for $\Delta p = 0.15$ is lower in case of pure water, compared to the mixture of particles and water. The increase of M_t/M_{t0} , caused by additional particles, is the largest in the range of $\Delta p = 0.2 - 0.3 \text{ bar}$, where the difference is 11%. M_t/M_{t0} begins to reduce with the increase of Δp ($\Delta p = 0.32 \text{ bar}$), due to the intensity of the vapour in the suction side of hydrofoil. The relative mass fraction between $\xi = 0.001$ and $\xi = 0.0016$ shows the same trend of increasing a relative change of M_t/M_{t0} .

Fig. 7 shows the variation of the formation of vapour phase of the mass fraction of particles (measurement of the relative noise). We see that a vapour phase occurs at relatively the same flow conditions (Δp , v_{su}). Particles in suspension increased the intensity of occurrence of cavitation.

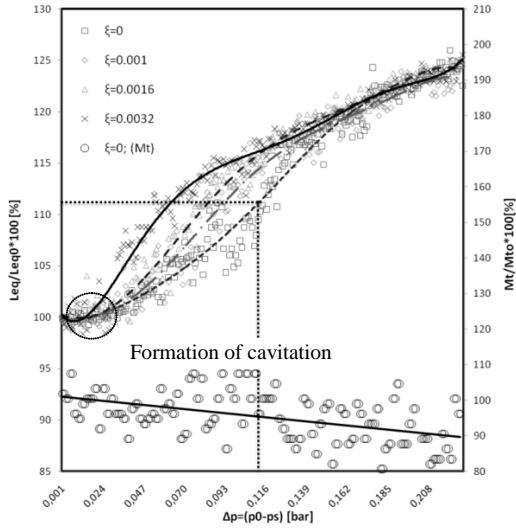


Fig. 7. Dependence of cavitation formation of the mass concentration of particles in suspension ($v_{su} = 2.6 \text{ ms}^{-1}, \alpha = 16^\circ$)

By increasing the relative noise (cavitation) by 15%, it does not detect changes in torque on the hydrofoil. In the case of pure water the difference in the change in noise is 7% ($\Delta p = 0.06, \xi = 0.0032$).

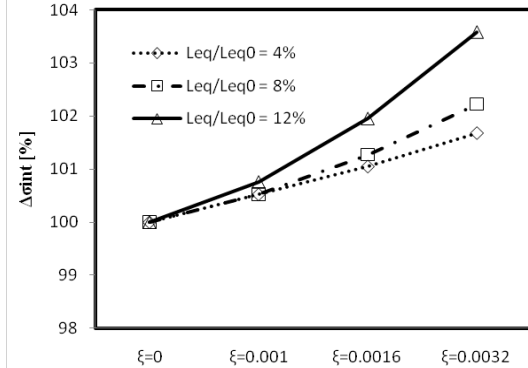


Fig. 8. Changes in the initial cavitation number - σ (intensity) on the development of vapour phase ($v_{su} = 2.6 \text{ ms}^{-1}, \alpha = 16^\circ$)

Cavitation number is changed by 3.6% in relatively the same relative intensity noise (Fig. 8). The increase in the vapour phase is estimated by comparing the results of measurements of water free of particles.

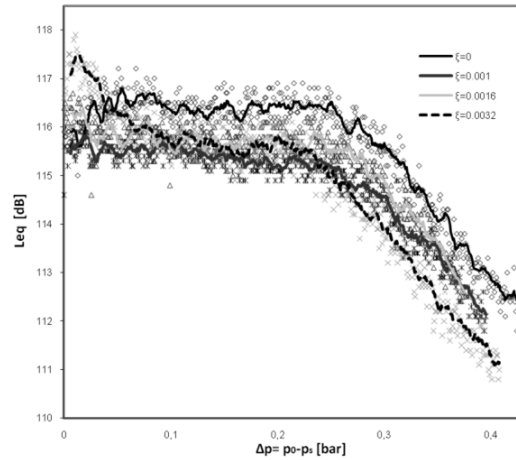


Fig. 9. The impact of mass fraction of particles on the change of relative intensity noise ($v_{su} = 3.3 \text{ ms}^{-1}, \alpha = 20^\circ$)

By increasing the vapour cloud (reduced cavitation number) and the mass fraction of particles decreases the relative noise (Fig. 9). We believe that the reduction of the relative noise, impact of increased volume of vapour phase, which reduces the speed of sound. By analyzing the standard deviations we find the maximum deviation of the relative noise in the area of initial cavitation (Fig. 10). By increasing the vapour phase, the standard deviation decreases.

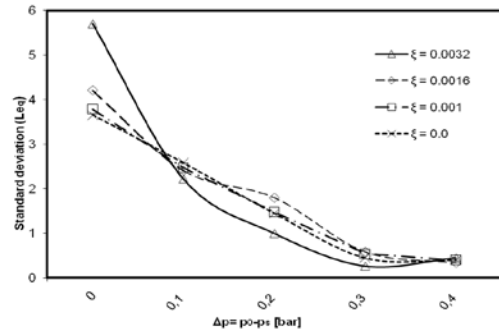


Fig. 10. Standard deviation of noise as a function of changes in mass concentrations and the reference pressure ($v_{su} = 2.9 \text{ ms}^{-1}, \alpha = 16^\circ$)

In all cases (mass concentrations) in the area of maximal developed vapour phase in a suspension is the standard deviation minimal.

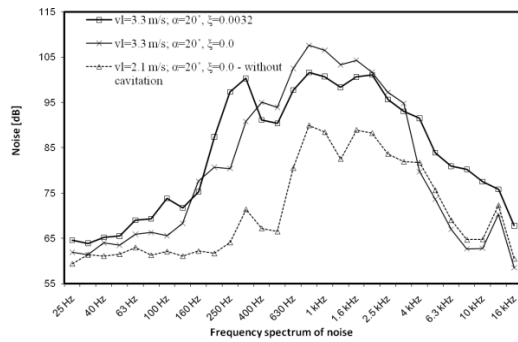


Fig. 11. *The impact of particles on the frequency range of cavitation noise*

Fig. 11 shows a comparison between the situation where no cavitation and the situation with developed cavitation (without particles and with the particles).

Particles markedly increase the intensity of sound at a frequency of 315 Hz, and the area between 4 and 12 kHz. We believe that the particles cause intense tearing vapour clouds at a frequency of 315 Hz. Similar experimental results of relative intensity noise is also recognized by other authors [1] and [9].

4 CONCLUSIONS

In the cavitation tunnel, we explored the effect of particles in the water on the change of the relative ratio of torque (M_t/M_{t0}) and the relative intensity of cavitation - noise on a hydrofoil for three different mass fractions of particles in water. In examining the impact of particles on lift-drag forces and noise, we compared the measured relative values of clean water free of particles. From the measured values, we have drawn the following conclusions:

- Change in torque (M_t/M_{t0}) depends on the development of vapour phase and the attachment hydrofoil. Development of vapour phase before the centre mounting reduces torque.
- Particles increase the torque on the hydrofoil. By increasing the mass fraction ζ of particles in suspension increases the torque. Increased change in torque between the state of the particles in suspension and pure water is measured at a higher pressure difference (lower cavitation number).
- With the increasing angle of hydrofoil (20°) and suspension velocity in the tunnel, the differences are due to added particles on the lower torque - M_t/M_{t0} .
- Vapour phase occurs at relatively the same cavitation number in case of pure water and the

added particles. Particles in suspension increased the intensity of occurrence of cavitation. By increasing the relative noise (cavitation) by 15%, it does not detect changes in torque on the hydrofoil.

- Standard deviation of the relative noise is the largest in the area of initial cavitation. By increasing the vapour phase, the standard deviation decreases.
- The formation of cavitation on the hydrofoil is rapidly detected by increased noise in the range of the occurrence of vapour phase. Noise increases in developed cavitation by 35%, in comparison to the state without cavitation. By measuring the relative noise rapidly detect the emergence of a vapour phase, as in the case of torque measurement (M_t/M_{t0}).
- The values of maximum amplitude of noise in frequency areas are reached in the range - 1 kHz. Particles markedly increase the intensity of sound at a frequency of 315 Hz, and the area between 4 and 12 kHz.

5 NOMENCLATURE

p_0	barometric pressure
p_s	system pressure
v	characteristic velocity
ρ	density
d_d	mean diameter
T	temperature
ξ_c	mass concentration
ξ	mass fraction
α	angle of hydrofoil
σ	cavitation number
Q_i	flow rate
C_D	drag coefficient
M_t	torque
M_t/M_{t0}	ratio of torque
STDEV	standard deviation
L_0	length of the profile

Subscripts

l	water phase
d	dispersed phase
m	mixture
su	suspension

6 REFERENCES

- [1] Brennen, C. (1995). *Cavitation and bubble dynamics*. Oxford University Press, Oxford.
- [2] Širok, B., Dular, M., Stoffel, B., Novak, M., Hočvar, M., Ludwig, G., Bachert, B. (2002). The influence of cavitation structures on the erosion of a symmetrical hydrofoil in a cavitation tunnel. *Strojniški vestnik - Journal*

- of Mechanical Engineering*, vol. 7, p. 368-378.
- [3] Wang, D., Atlar, M., Sampson, R. (2006). *An experimental investigation on cavitation, noise, and slipstream characteristics of ocean stream turbine*. University of Newcastle upon Tyne, Newcastle upon Tyne.
- [4] Xavier, E., Egusquiza, E., Farthat, M., Avellan, F., Coussirat, M. (2006). Detection of cavitation in hydraulic turbines. *Mechanical Systems and Signal Processing*, vol. 20, p. 983-1007.
- [5] Mei, Z.Y., Wu, Y.L. (1996). Review of research on abrasion and cavitation of silt-laden flow through hydraulic turbine runner in China". *Proceedings of the 19th IAHR, Section of Hydraulic Machinery and Cavitation*, Valencia, p. 641-650.
- [6] Shengcai, L. (2003). *Cavitation enhancement in silt erosion: Obstacles & way forward*, 5th International Symposium of Cavitation, Osaka, Japan.
- [7] Duan, C.G., Karelin, V.Y. (2002). Abrasive erosion & corrosion of hydraulic machinery. *International Research Center on Hydraulic Machinery*, vol. 2, Imperial College Press, London.
- [8] Shengcai, L. (2006). Cavitation enhancement of silt erosion - An envisaged micro model. *Wear*, vol. 260, no. 9-10, Vol. 31, p. 1145-1150.
- [9] Širok, B., Dular, M., Stoffel, B. (2006). *Kavitacija, i2*, Ljubljana. (in Slovenian)
- [10] Keller, A.P., Rott, H.K. (1999). Scale effects on tip vortex cavitation inception. *Proceedings of 3rd ASME/JSME Joint Fluids Engineering Conference, International Symposium On Cavitation Inception*, San Francisco, USA