

# CFD-based investigation of the response of artificial ventilation in case of tunnel-fire

Mezid Muhasilovic<sup>1</sup>, Jožef Duhovnik<sup>21</sup>

<sup>2)</sup> University of Ljubljana, Faculty of Mechanical Engineering, The LECAD Laboratories, Slovenia

*The fact that many underground facilities, as large-scale spaces, differ in their geometric characteristics, continually sets new tasks for the researcher investigating the fluid phenomena. In this manner, we performed a computationally aided investigation of the new covered traffic road-communication that goes under a part of the Slovenian capital of Ljubljana. Although not yet finished – we were in position with the employed RANS transient approach (interpreting turbulence by  $k-\varepsilon$  model) using the technical drawings of the road-tunnel for the design of the computational domain, to give a CFD-forecast for the effectiveness of ventilation in the event of both, 40 MW and 80 MW fires.*

©2011 Journal of Mechanical Engineering. All rights reserved.

**Keywords:** CFD, large-scale combustion, tunnel-fire, critical velocity

## 0 APPLIED CFD-BASED APPROACHES THUS FAR

Due to an increasing number of accidental fires in enclosed spaces, especially in the area of modern society where our freedom is mostly expressed – traffic and tourism – there is an on-going need to undertake scientific research, aiming at better understanding these reactive flow phenomena. One of the direct benefits of such research is a suggestion for the implementation of the most effective fire suppression methods, that should follow world-wide statistical data of one traffic accident occurring every 107 kilometres of covered (tunnel) road [1] and [2].

The field models for numerical research of fires in enclosed spaces (which was our applied mode as well) are established in the CFD-community over the zone-model-approach [3] and [4]. Such codes (field model based) do not divide the area of interest into very few smaller control volumes only, but are based on the full solution of the fundamental physical laws of conservation. Here, the computational domain is divided into thousands of much smaller control volumes -cells-, where, after their discretisation mathematical models are “translated” into a programme code for combustion, radiation, turbulence etc. Therefore, between the mid 1980s and mid 1990s, hardware sources supported computational domains with few thousands cells [5] and [6]. However, in spite of these limiting conditions very satisfying results were accomplished in attempts of both, the validation [7] to [11] of software tools and aimed CFD-prognoses for particular explored cases of confined fluid phenomena [1] and [12].

Modern field-model codes that have been engaged in CFD-research within the last decade supported by powerful hardware can cope with the domains made out of several hundred thousands cells. All of these research attempts that have been brought up into the CFD-community, report on good capability of the numerical approaches used in handling the reactive flows in straight enclosed traffic objects that were validated against some distinguished experiments [13].

However, besides the slight denivelation of a few percent, the geometry of the arbitrary tunnels was relatively a simple one [14]. Therefore, in our research, we explored the “Sentvid” tunnel that goes under the city of Ljubljana and is being changed in its cross-section surface (from three-lane down to two-lane road). At about half of its length of 1470 m it has the bifurcation zone, where one-lane road (tunnel-part) climbs up to the local road.

## 1 TREATMENT OF THE TURBULENCE - APPLIED MATHEMATICAL MODEL IN THIS STUDY

In this study the flow phenomena are computed by the Reynolds Averaged Navier-Stokes (RANS) equations, with the turbulence  $k-\varepsilon$  model [15], representing the major characteristic of the applied CFD-investigation-tool of the FLUENT; and handling the buoyancy by applying the Boussinesq approximation. This approach is not affected by the fluctuation of the initial conditions, offering a more accurate presentation of the time dependent flow – particularly the distribution of the gaseous combustion products [16]. Since the investigations have shown that the maximum value for the Mach Number is of the order of 0.035, such a flow can be assumed as incompressible [17]. Therefore, while crossing the reaction front, the fluid does not undergo thermal-caused expansion and the reaction makes no impact onto flow-velocity. A further assumption, to have a planar propagation front of combustion in a motionless fluid, leads to the application of the Boussinesq approximation [18] without external forces [19]. Here, the flow velocity obeys the incompressible Navier-Stokes equation with a temperature-dependent force term [19].

The change of temperature is described by an advection-reaction-diffusion equation. For this incompressible gaseous reactive flow at low velocity, the governing equations of the combustion-induced flow read:

$$\frac{\partial \bar{v}_j}{\partial x_j} = 0, \quad (1)$$

$$\frac{\partial \bar{v}_i}{\partial t} + \frac{\partial (\bar{v}_i \bar{v}_j)}{\partial x_j} = -\frac{1}{\rho} \frac{\partial \bar{p}}{\partial x_i} + \frac{1}{\rho} \frac{\partial \bar{\tau}_{ij}}{\partial x_j} - g_i \alpha \Delta \bar{T}, \quad (2)$$

$$\frac{\partial \bar{T}}{\partial t} + \frac{\partial (\bar{T} \bar{v}_j)}{\partial x_j} = \frac{\partial}{\partial x_j} \left( \frac{\lambda}{\rho c_p} \frac{\partial \bar{T}}{\partial x_j} \right) + \frac{1}{z} R(T), \quad (3)$$

Here  $\bar{v}_i$  denotes the average velocity component,  $\bar{T}$  the mean local temperature,  $\bar{p}$  the pressure,  $\rho$  the density,  $t$  the time and  $x_i$  the space coordinates. The  $R(T) = 1/4 T(1-T)$  stands for reaction rate [19] where the reciprocal value of reaction time-scale is represented by  $z$ ,  $\lambda$  is the thermal conductivity,  $c_p$  is the heat capacity at the constant pressure. Temperature  $T$  will also be used as the expression for reaction-progress-variable whose purpose is to distinguish the burned, the unburned and the partially burned state, providing an easy interpretation of flame propagation. The term  $-g_i \alpha \Delta \bar{T}$  denotes buoyancy treated according to the Boussinesq approximation, where  $\Delta \bar{T}$  shows the difference between local and reference temperature. The symbol  $g$  denotes the gravity and  $\alpha$  is the coefficient of thermal expansion. The model for the stress tensor [20],  $\bar{\tau}_{ij}$  is related to the local strain rate:

$$\tau_{ij} = (\tau_{ij})_N + (\tau_{ij})_T, \quad (4)$$

where we distinguish between the Newtonian stress  $(\tau_{ij})_N = 2\mu \bar{S}_{ij}$  featuring molecular viscosity; and the turbulent Reynolds stress  $(\tau_{ij})_T = 2\mu_T \bar{S}_{ij}$ , since the stress rate tensor  $\bar{S}_{ij}$  is defined as:

$$\bar{S}_{ij} \equiv \frac{1}{2} \left( \frac{\partial v_i}{\partial x_j} + \frac{\partial v_j}{\partial x_i} \right), \quad (5)$$

and the turbulent viscosity;

$$\mu_T = C_\mu \frac{k^2}{\varepsilon}, \quad (6)$$

with  $k$  the turbulent kinetic energy and  $\varepsilon$  the dissipation rate of turbulent energy.

The applied  $k$ - $\varepsilon$  model [21] is a two-equation eddy viscosity model [22] and [23] that uses transport equations for these two variables [24]. One of these equations governs the distribution through the field of  $k$ , the local kinetic energy of the fluctuating motion. The other one yields the energy dissipation rate  $\varepsilon$  [25].

$$\frac{\partial k}{\partial t} - \nabla \cdot \left( C_\mu \frac{k^2}{\varepsilon} \nabla k \right) = C_\mu \frac{k^2}{\varepsilon} P_d - \varepsilon - G_b, \quad (7)$$

$$\begin{aligned} \frac{\partial \varepsilon}{\partial t} - \nabla \cdot \left( C_\varepsilon \frac{k^2}{\varepsilon} \nabla \varepsilon \right) &= \\ &= C_1 k P_d - \frac{\varepsilon}{k} (C_3 \lambda_v N^2 + C_2 \varepsilon) \end{aligned} \quad (8)$$

The energy term  $G_b = \alpha g_i \frac{\mu_t}{Pr_t} \nabla \bar{T}$  models the buoyancy effects, where  $Pr_t$  denotes turbulent Prandtl Number (which is of the order of unity). The constants are given:  $C_1 = 0.126$ ,  $C_2 = 1.92$ ,  $C_\mu = 0.09$ ,  $C_\varepsilon = 0.07$ .

## 2 BOUNDARY CONDITIONS AND MESHING IN COMPUTATIONAL DOMAIN – A NUMERICAL APPROACH

For transient simulations (a CFD-mode that was applied in this study) the governing equations must be discretised in both space and

time [23] and [26]. In choosing the numerical method we rely on the standard of the finite volumes [17], [26] and [27]. The spatial discretisation of time-dependent equations employed a segregated solution method. The linearised equations result in a system of linear equations for each cell in the computational domain, containing the unknown variable at the cell centre as well as the unknown values in the surrounding neighbour cells.

This mechanism for a scalar transport equation is also used to discretise the momentum equations; in the same mode for the pressure field (if face mass fluxes were known) and the velocity field will also be obtained in the same way. In case the pressure field and face mass fluxes are not known, FLUENT [23] uses a co-located scheme, whereby pressure and velocity are both stored at cell centres. The need for interfacial values includes an application of an interpolation scheme to compute pressure and velocity from cell values. The integration over the arbitrary volume (a cell in a computational domain) can be performed yielding the discretised equation for the mass flux through an arbitrary surface of a face.

In the sequential procedure of the segregated solver, the continuity equation is used as an equation for pressure as well [23]. However, the pressure does not appear explicitly for incompressible flows since the density is not directly related to pressure. Therefore, the SIMPLE-family [26] of algorithms is used for introducing pressure into the continuity equation. In this way it supports the pressure-velocity coupling through the algorithm for the unsteady flows as for the fluid mechanics phenomenon, explored in this study. The SIMPLE uses a relationship between velocity and pressure corrections to enforce mass conservation and to obtain the pressure field.

Since in our CFD-approach, the longitudinal artificial ventilation was employed immediately, the tunnel-entrance and exits (both towards the main tunnel-line and towards the local road) characterised as open (pressure) boundaries with pressure increase due to the ventilation-caused velocity (of 4 m/s). The fuel “pool” – the simulated fire-place, has been determined by the constant max flux rate of heptane of the order 0.4545 kg/m<sup>2</sup>s [28] for simulating the fire thermal power of 40MW over the surface of 2 m<sup>2</sup>; and for the 80 MW fire [29] the double mentioned value for the mass flux. Heptane was taken as an inflammable good as one of the most commonly used fuels in experiments and fire-tests.

The tunnel itself (the left tube), with the slope of 2.2%, has two major main-curves with a Radius of 4000m and 1500 m with both “horse-shoe”- cross-section and rectangular- cross-section, where the first one determines the first 1080 m of the tunnel. Starting as a three-lane tunnel, after the bifurcation (on the 720<sup>th</sup> meter of its length) the “main stream” of the “horse-shoe-shaped” tunnel “continues” as a

two-lane traffic communication; the “horse-shoe-shaped” tunnel line exits and elevates to the point of about 12 m above the road-level of the main tunnel-stream, with the length of a further 400 m and a change from a one-lane to the two-lane “horse-shoe-shaped” cross-section. Therefore, the Aspect-Ratio changed in this tunnel: for three-lanes part  $Ap = 1.707$  to the rectangular and other horse-shoe-shaped part with two lanes with  $Ap = 1.32$ .

Tunnel-entrance as open (pressure) boundary was used for initializing computational values for the velocity and pressure in the domain since the global temperature was set to the 293 K.

The tunnel housing, tunnel road and tunnel walls, were presumed to be heat transparent. This decision was based on previous research [30] and [31], using the particular thermal conductivity of a rock where a tunnel was built through [32], the reality-oriented investigation on tunnel-construction was conducted. Particularly for the Sentvid tunnel that was built in the Karst area, the specific thermal conductivity of such limestone ( $\lambda = 2.3 \text{ W/mK}$ ) [32] and [33] was integrated in the boundary conditions.

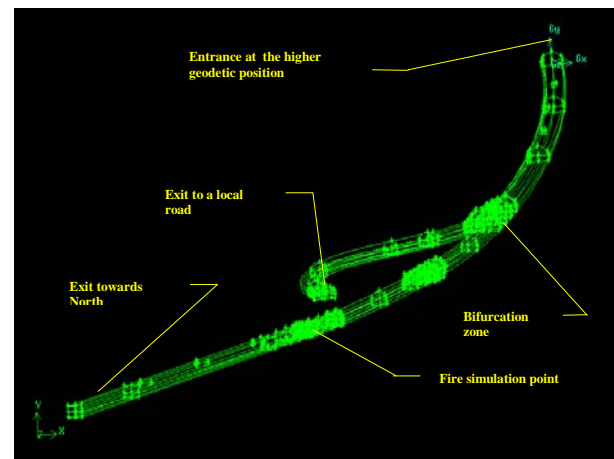


Figure 2-1: Left tube of “Sentvid” as computational domain the 1470 m long left tube with exit to the local road that runs above the tunnel. On the upper side there is the entrance from Ljubljana (from the south)

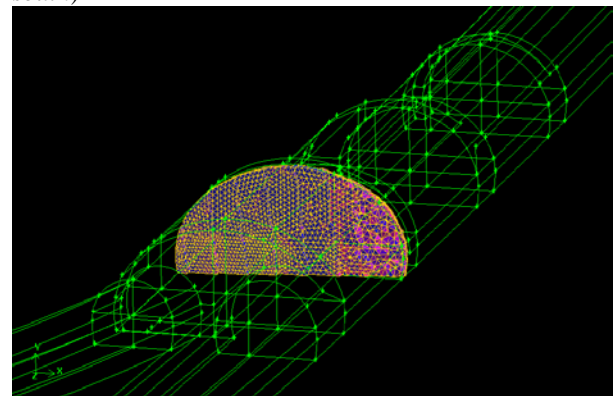
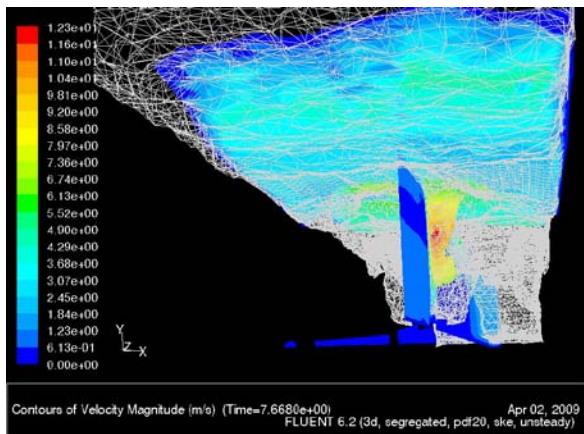


Figure 2-2: Road-junction within the tunnel with the continuing tunnel-direction (right) and the beginning of the exit line towards local road (left). Different characteristics of the single-cells were

### 3 FIRST STEP IN INVESTIGATION – THE SIMULATION OF 40 MW-FIRE WITH NATURAL VENTILATION

After the explained computational approach was validated [34], a CFD-investigation of the 40 MW fire accident in tunnel natural air-movement only, was performed. This numerical experiment ran for 120 s, which is the time of real-case physical experiments [34]. The findings of this investigative step assured us that after accidental fire is established (7<sup>th</sup> second) – there is a strongly expressed propagation (113<sup>th</sup> second) of the hot gaseous combustion products towards the actual traffic-entrance (higher geodetic position). The accompanied occurrences are thermal damaging, not only to the re-enforced concrete (concrete spalling) of the tunnel cavity, but the also destruction of the asphalt road-layer. Those results point to the extremely important task for the longitudinal (forced) ventilation that should not only induce evacuation of the smoke towards the positive tunnel direction (in the sense of traffic) but should protect the tunnel body and road-elements from thermal damages before a fire-event is localised and finally extinguished.



applied in order to achieve mesh-independency and save computing-time in one stroke.

Figure 3-1: The 7<sup>th</sup> second of the 40MW fire - velocity fields point at not established propagation of the gases.

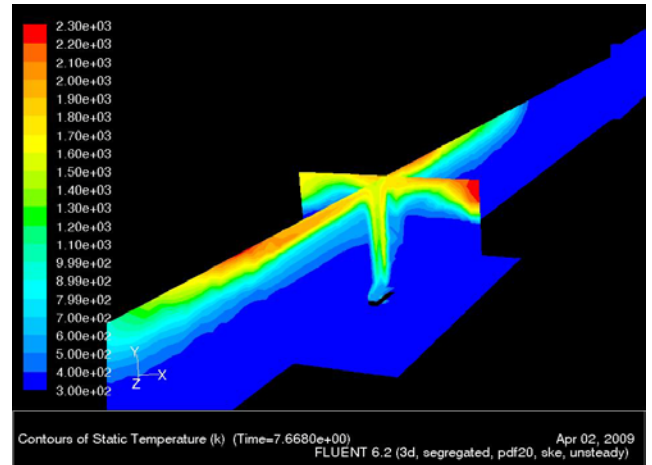


Figure 3-2: The view to the fire-place in the part with rectangular cross-section in 7<sup>th</sup> second

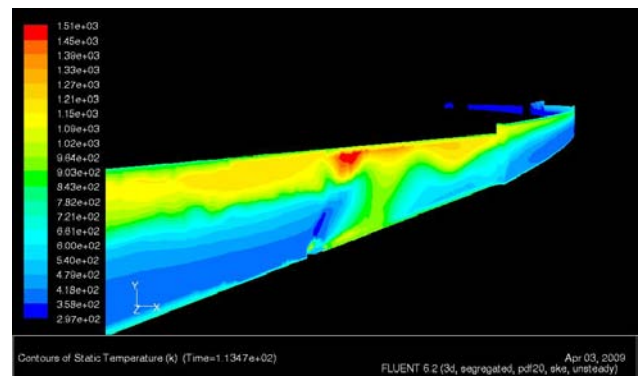


Figure 3-3: In 113<sup>th</sup> second fire is “leaving” the actual source and temperature is pointing to the inflaming of the road-asphalt. Concrete spalling is inevitable. The smoke is moving towards entrance

### 4 SIMULATION OF 40 MW-FIRE AND 80MW-FIRE WITH ARTIFFICIAL LONGITUDINAL VENTILATION

We started this numerical experiment with an assumption that the accidental fire (both of 40 MW and of 80 MW) was already established and the longitudinal ventilation in the left-tube (composed out of 7 ventilator-pairs) was set to meet the criteria of the “critical velocity” – the velocity in the

ventilating process of a tunnel-fire-event that is just enough to stop the propagation of the smoke in unwanted direction.

We estimated that for this covered road facility the value of the critical velocity is 4m/s. Indeed, in the area of the fire-accident, the overall velocity gains value due to the constructive interference of buoyant forces in fluid (caused by the combustion process) and the longitudinal air movement (caused by forced ventilation).

However, the applied ventilation-velocity (due to the 16 Pa pressure-difference) in the 22<sup>nd</sup> second of the fire-accident shows the characteristics of “back-layering” – the smoke movement along the tunnel-ceiling against the applied ventilation. The temperature profiles pass the concrete spalling-temperature, which might start in about the 10<sup>th</sup> minute of a thermal load [35].

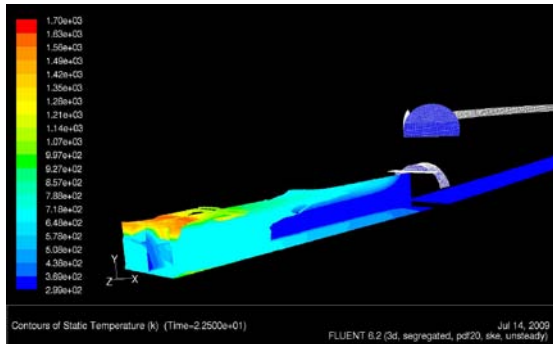


Figure 4-1: The view of the 40MW- fire-place towards the tunnel bifurcation-zone (deep in the sketch). Upper left, is the planned exit to local road. A bit further from the fire place is the connection of the two kinds of tunnel cross-section-parts (rectangular and “horse-shoe-shaped”). The temperature iso-surfaces showing destructible thermal load in the vicinity of the tunnel-ceiling (above the fire-place)

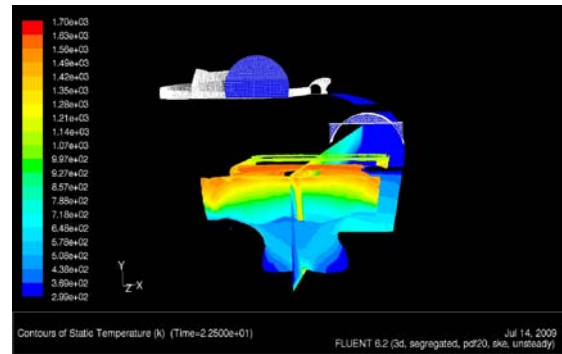


Figure4-2: A side view of the 22<sup>nd</sup> second of the longitudinal ventilation in case of 40 MW fire event; on the iso-surfaces that represent ventilation velocity of 4 m/s the temperature images are drawn

In a further extraction of the results of our numerical experiment, we noticed that in the 88<sup>th</sup> second during the 40 MW fire, the longitudinal ventilation was as capable (in providing the lower temperatures on the tunnel cavity) as in the 120<sup>th</sup> second of the same fire-event. This implies that artificial longitudinal ventilation adjusted for 16 Pa of pressure difference can cope with the fire event up to 40 MW of fire’s thermal-power – and this already after a minute-and-the-half. With this engagement, the possible RC-spalling is inhibited. However, the thermal impact (due to the developed temperature fields and due to the heat irradiance) destroys the asphalt road-layer that is, in this case, a cheaper part of this underground space facility, in terms of reconstruction.

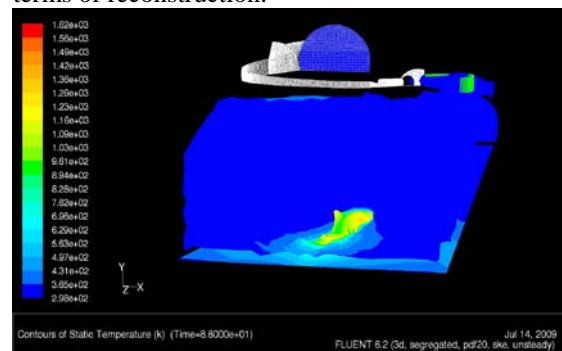


Figure 4-3

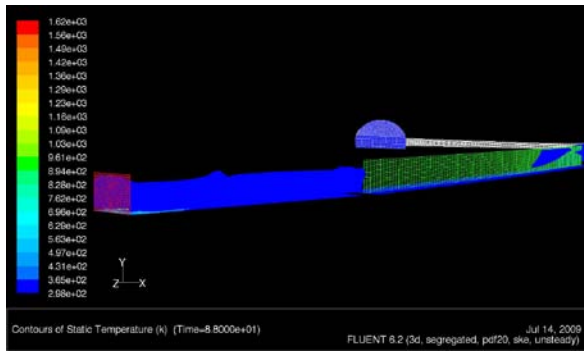


Figure 4-4

Figures 4-3, 4-4: Distinguishing two major groups of the flame-shapes in enclosure: the ones, that impinge on the tunnel roof and the others that, influenced by the longitudinal (air)stream, do not; during the CFD-investigations, we recognised the latter ones [36]; here, the 4 m/s ventilation-velocity in the 88<sup>th</sup> second of the 40 MW fire provides protection for the walls of the tunnel cavity. Still, there is a minor “back-layering” to be seen on the ceiling, above the fire-place only

The additional size of the temperature impact offers a view in 112 s, at the tunnel-ceiling and tunnel-walls next to the 80 MW fire-place (Fig 4-5). The zones with the developed temperature of 500 K (the begin of the RC-spalling) “resist” the longitudinal ventilation, that in the 40 MW fire event was able to cope the accident. In this stage of the fire-development these occurrences present a dangerous part in the construction of the tunnel body (Figure 4-5).

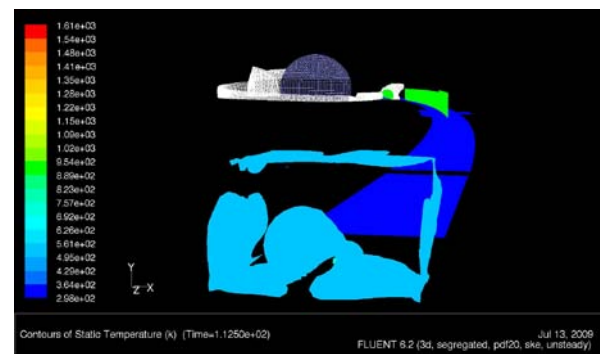


Figure 4-5

And not even in the 126<sup>th</sup> second, during the developing of the 80 MW fire-consequences, the applied longitudinal artificial ventilation with the velocity of 4 m/s was not able to perform a completely successful protection of the tunnel-walls and the tunnel-ceiling (Figure 4-6); but the areas with the temperature of 500K that stand for the beginning of the RC thermal destruction can still be seen (Figure 4-6).

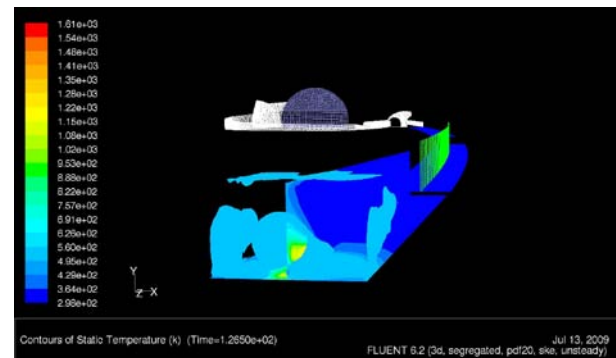


Figure 4-6: 126<sup>th</sup> second of the 80MW-fire; the central tunnel line is presented partly by the “neutral” grid and partly by the temperature’s central-plane

The result we gained on the effectiveness of the proposed ventilation magnitude in case of 80 MW fire, encourages a further numerical experiment in order to estimate the optimal velocity of the ventilation (in case of 80 MW fire). It will offer appropriate thermal protection until accidental fire is fully under control.

However, the chosen velocity of the ventilation was able to suppress propagation of the hot gaseous combustion products in unwanted direction in both accidental cases.

By performing this study on only one object of interest of the given geometric characteristics, the CFD-based investigation on the accidental fire in the artificially ventilated tunnel "Sentvid" was conducted according to both standards and novel experimental [37] to [40] and computer aided[41] to [43] research[44] and [45].

With the results of this research-attempt, we intend to also address the civil-engineering

sector[46, 47] and enlarge data-base for the medical health-protection[48].

The specific geometry of the object of interest – this traffic road-object built in Slovenia – was a "fine provocation" to conduct this research, expecting new answers due to the possible impact of a reality-oriented enclosure (computational domain) onto large-scale fire and escorting occurrences.

The "chimney effect" of the exit up to the local road was not "strong enough" and its possible influence was inhibited due to applied longitudinal ventilation that forced gaseous combustion products towards traffic-positive direction, already after the first minute-and-a-half of numerical investigations. Therefore, the propagation of the gaseous products "followed" the tunnel line (towards lower geodetic position) and in the cases of 40MW-fire and 80MW-fire, the expected major influence of the tunnel-road exit was not noticed.

## 5. ACKNOWLEDGEMENT

Authors do thank to Mr. Marko Zibert, Dipl. Ing. and to ass. prof. Jurij Kazimir Modic, PhD. for decisive support in performing this study. Special gratitude goes to prof. Karel Cihotny, PhD. as well as to prof. Vazlav Koza, PhD. from Institute of Chemical Technology, Prague for immense software-support during this CFD-based research.

## 6 REFERENCES

1. Tuovinen, H., Bengston, S., Holmstedt, G. (1996). sensitivity calculations of tunnel fires using CFD. *Fire Technology*, , vol. 32, no. 2, p. 99-119.
2. Kumar, S. (1999). Validation of a CFD model for fires in the memorial tunnel. *Proceedings of 1<sup>st</sup> International Conference on Tunnel Fires*, , p.??-??.
3. Kordina, K., Heins, T. (1990). Untersuchungen über die Brand- und Rauchentwicklung in Unterirdischen Verkehrsanlagen - Katastrophenschutz in Verkehrstunneln. *Bauwesen und Städtebau*, , vol. 481, no. 6, p. 121-127. (in German)
4. Gray, W., A Computer Model to Assess Fire Hazards in Tunnels (FASIT). *Fire Technology*, 1994, vol. 30, no. 1, p. 134-154.
5. Kumar, S., Cox, G., Mathematical Modelling of Fires in Tunnels. in 5th International Symposium on the Aerodynamics & Ventilation of Vehicle Tunnels. *Proceedings of Fifth International Symposium on the Aerodynamics and Ventilation of Vehicle Tunnels*, Lille, May 20.-22., 1985.
6. Kumar, S., Cox, G., Radiation and Surface Roughness Effects in the Numerical Modelling of Enclosure Fires. *Proceedings of Fire Safety Science - 2nd International Conference*, Tokyo, June 1., 1988.
7. Chasse, P., Sensitivity Study of Different Modelling Techniques for the Computer Simulation of Tunnel Fire: Comparison with Experimental Measures. *Proceedings of First CFDS International User Conference*, Oxford, May 6. - 7., 1993.
8. Briollay, H., Chasse, P., Validating and Optimizing 2D and 3D Computer Simulations for the Offenegg Tunnel Fire Test. 1<sup>st</sup> ed., New York: Chapman & Hall, 1996, 544 p., ISBN-10: 0412992914
9. Kumar, S., Cox, G., Mathematical Modelling of Fires in Tunnels - Validation of JASMINE, 1<sup>st</sup> ed. Berkshire: Transport and Research Laboratory, 1986. 87 p. ISSN: 0266-7045
10. Tuovinen, H., Validation of Ceiling Jet Flows in a Large Corridor with Vents Using the CFD Code JASMINE. *Fire Technology*, 1997, vol. 33, no. 2, p. 183-186.
11. Kunsch, J.-P., Simple model for control of fire gases in a ventilated tunnel. *Fire Safety Journal*, 2002, vol. 37, no. 1, p. 67-81.
12. Bishop, S. et altri, Cofiguration Factor for Radiation in a Tunnel ar Partial Cylinder. *Fire Technology*, 1993, vol. 29, no. 3, p. 281-288.
13. Wehlan, M., Memorial Tunnel Experiments. (Personal communication), Washington(USA), Podgora(Croatia), July 16.-17., 2006.
14. Muhasilovic, M., Deville, M., Tunnel-Curvature's influence on the propagation

- of the consequences of large-scale accidental fire - a CFD-investigation. Turkish Journal of Engineering and Environmental Sciences, 2007. vol 31, no. 6, p. 391-401.
15. Neophytou M. K.-A., Britter, R. E., A simple model for the movement of fire smoke in a confined tunnel. Pure and Applied Geophysics, 2005, vol. 162, no. 10, p. 1941-1954.
  16. Liu, S.-L., et alri, Large eddy simulations for studying tunnel smoke ventilation. Tunneling and Underground Space Technology, 2004, vol. 19, no. 6, p. 577-586.
  17. Peric, M., Ferziger, J. H., Computational Methods for Fluid Mechanics, 2<sup>nd</sup> ed. Berlin: Springer Verlag 1996, 423 p., ISBN: 3540594345
  18. Baum, H.- R., et alri, Gravity-current transport in buildings fires. Proceedings of International Conference on Fire Research and Engineering, Orlando, September 10. - 15., 1995.
  19. Vladimirova, N., Model flames in the Boussinesq limit. Combustion Theory and Modelling, 2007, vol. 11, no. 3, p. 377 - 400.
  20. Jongen, T., Gatski, T.-B., Nonlinear eddy viscosity and algebraic stress models for solving complex turbulent flows. Progress in Aerospace Sciences, 2000, vol. 36 no. 8, p. 655-682.
  21. Leupi, C., Atinakar, M., S., Deville, M., Numerical modeling of cohesive sediment transport and bed morphology in estuaries. International Journal for Numerical Methods in Fluids, 2007, vol. 57, no. 3, p. 237-263.
  22. Zhang, W., et alri, Turbulence statistics in a fire room model by large eddy simulation. Fire Safety Journal, 2002, vol. 37, no. 8, p. 721-752.
  23. Soley, M., FUENT-Manual. Retrieved on 20.11.2006 from <http://lin.epfl.ch>.
  24. Britter, R.-E., Woodburn, P.-J., CFD-simulations of a tunnel fire - part one. Fire Safety Journal, 1996, vol. 26, no. 1, p. 35-62.
  25. Malin, M.-R., Markatos, N.-C., Mathematical modelling of buoyancy-induced smoke flow in enclosures. International Journal of Heat Mass Transfer, 1982, vol. 25, no. 1, p. 63-75.
  26. Malalasekera, W., Versteeg, H.-K., An Introduction to computational fluid dynamics. 1<sup>st</sup> ed., London: Longman Group Ltd., 1995, p. 257, ISBN 978-0-13-127948-3
  27. Hirsch, C., Numerical Computation of Internal and External Flows - Volume-I. 2<sup>nd</sup> ed., New York: John Wiley & Sons. 2007, p. 680. ISBN-13: 978-0-7506-6594-0
  28. Babrauskas, V., Estimating large pool fire burning rates. Fire Technology, 1983, vol. 19, no. 4, p. 251-261.
  29. Vela, I. et. alri, Scale Adaptive Simulation (SAS) of heat radiation and soot amount in a large-scale turbulent JP-4 pool fire. Proceedings of DECHEMA, Wiesbaden, Septembre 26., 2006.
  30. Muhasilovic, M., Deville, M., Turbulent Reactive Flow. Retrieved on 7.5.2007, from <http://lin.epfl.ch>.
  31. Muhasilovic, M., CFD-approach in investigation of consequences of accidental large-scale fires in road tunnels with natural ventilation, Seminar of STI-ISE-LIN, Lausanne, May 5., 2007
  32. Zhao, J., Tunneling seminar in Laboratoire Mécanique du Roche. Retrieved on 9.9.2007 from <http://lmr.epfl.ch>.
  33. Rüdél, P., Schäfer, S., Technische Informationen über den Solnhofener Naturstein. Retrieved on 12.5.2009 from <http://www.also-natursteine.de>.
  34. Zibert, M., Modic, J., Fire calloric size in physical experiment. (Personal communication), Ljubljana (Slovenia) October 2008.
  35. Mang, H., Thermally-caused damage of RC-constructions, (Personal Communication), Vienna (Austria), December 2008.
  36. Dayer, A., Accident a San Francisco, in Le Matin Bleu. Retrieved on 15.2.2008, from <http://www.lematinbleu.ch>.
  37. Megret, O., Vauquelin, O., Smoke extraction experiments in case of fire in a tunnel. Fire Safety Journal, 2002, vol. 37, no. 5, p. 525-533
  38. Ingason, H., Correlation between temperatures and oxygen measurements in a tunnel flow. Fire Safety Journal, 2007, vol. 42, no. 1, p. 75-80.
  39. Modic, J., Fire Simulation in Road Tunnels. Tunnelling and Underground Space Technology, 2003, vol. 18, no. 5, p. 525 - 530.
  40. Megret, O., Vauquelin, O., A model to evaluate tunnel fire characteristics. Fire Safety Journal, 2000, vol. 34, no. 44, p. 393-401.
  41. Wu, Y., Vauquelin, O., Influence of tunnel width on longitudinal smoke control. Fire Safety Journal, 2006, vol. 41, no. 6, p. 420-426.
  42. Britter, R.-E., Woodburn, P.-J., CFD Simulation of a Tunnel Fire - part two. Fire Safety Journal, 1996, vol. 26, no 1. , p. 63-90.
  43. Jagger, S.-F., Grant, G.-B., Lea, C.-J., Fires in Tunnels. Philosophical

- Transactions, Mathematical, Physical, Engineering Sciences, 1998, vol. 356, no. A, p. 2873-2906.
44. Ryou, H.-S., Lee, S.-R., A numerical study on smoke movement in longitudinal ventilation tunnel fires for different aspect ratio. *Building and Environment*, 2006, vol. 41, no. 6, p. 719-725.
  45. Beard, A.-N., Carvel, R.-O. Jowitt, P.-W., The influence of longitudinal ventilation systems on fires in tunnels. *Tunneling and Underground Space Technology*, 2001, vol. 16, no. 1, p. 3-21.
  46. Bisby, L.-A. et alri, Experimental evaluation of the fire behaviour of insulated fibre-reinforced-polymer-strengthened reinforced concrete columns. *Fire Safety Journal*, 2006, vol. 41, no. 7, p. 547-557.
  47. Wald, F. et alri, Experimental behaviour of a steel structure under natural fire. *Fire Safety Journal*, 2006, vol. 41, no. 7, p. 509-522.
  48. Lestari, F. et alri, An alternative method for fire smoke toxicity assessment using human lung cells. *Fire Safety Journal*, 2006. vol. 41, no. 8, p. 605-615.